



Dr. Vishwanath Karad
**MIT WORLD PEACE
UNIVERSITY** | PUNE
TECHNOLOGY, RESEARCH, SOCIAL INNOVATION & PARTNERSHIPS



School of Polytechnic & Skill Development

Prof. Yogesh J. Gaikwad

May 12, 2020

Go.Data

During an outbreak, a large amount of data and information is generated in a short period of time and must be kept up to date and shared with different actors in the response. This includes case data, contact data, laboratory and clinical data, contact follow-up information.

The outbreak response team working in the field needs robust and reliable tools to manage potentially large amounts of data and efficiently coordinate their essential work. The outbreak response team is a multi-partner collaboration. Experts from ministries of Health, non-governmental organisations, United Nations agencies etc. may be deployed and need to work together in a clear and efficient manner.

[Watch Short Video By WHO Health Emergency Services](#)

Project Goal

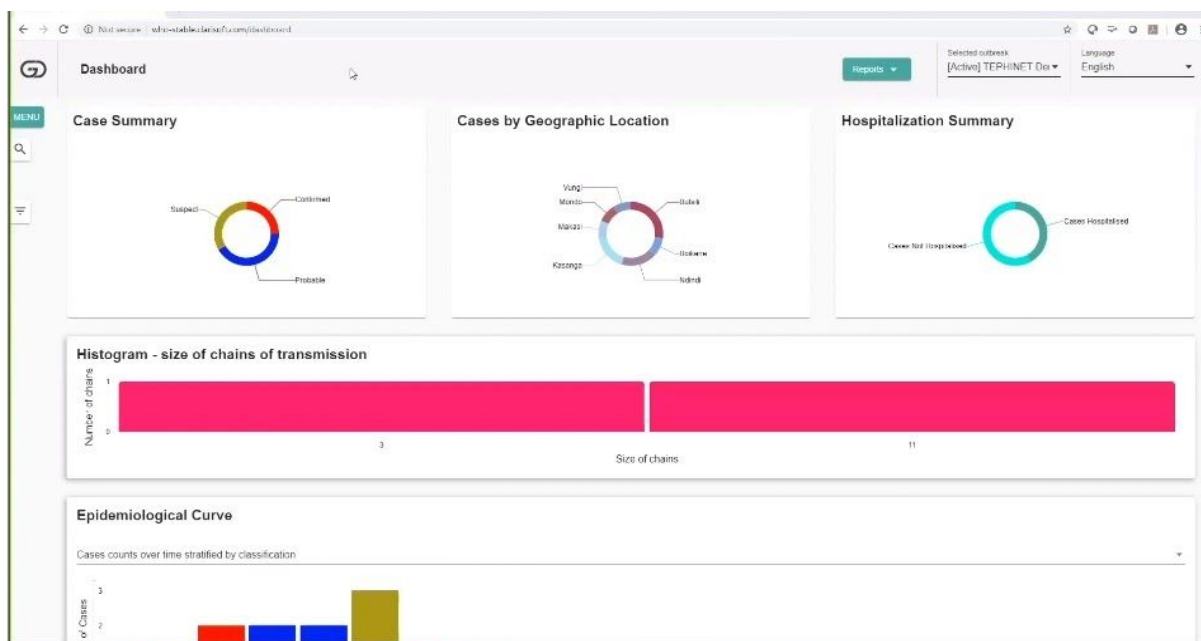
Design, develop and deploy comprehensive Go.Data software to be used globally by WHO, Member States and Partners to :

Support and facilitate outbreak investigation including field data collection contact tracing and visualization of chains of transmission.

Developing Go.Data

by **WHO and GOARN Partners**

Designed for outbreak investigators and epidemiologists, the Go.Data tool is an easy to use case and contact data collection and visualization of disease transmission that can help responders choose the right interventions to stop a disease from spreading.



As a global solution, Go.Data aims to strengthen and enhance technical support to all countries for readiness activities; outbreak risk assessments; field investigations and response, including response research.

The Go.Data tool allows for more rapid data entry, offers better visualization of chains of transmission and runs in stand-alone and connected modes, enabling more flexible ways of working and improved data sharing.

In addition, it allows access through mobile devices, especially to support work of the contact tracing teams.

This tool will be made available in due course globally to WHO staff, Member states and Partners to support and facilitate outbreak investigation focusing on field data collection, contact tracing and visualization of chains of transmission.

[Click to view Certificate of Participation by WHO](#)